
Hearing Loss Identification and Correction

An Unofficial Guide by Christopher Nigro

A Little About Me

My name is Christopher Nigro. I am an Evesham resident. I have been Deaf since the age of 9. I recently had a bilateral cochlear implant after my hearing loss worsened. Hearing aids no longer assisted in addressing my hearing.

Dr. Ganju invited me to share information about hearing loss and possible solutions.

Personal Milestones

April 2023

Bilateral hearing test to determine candidacy. 0%.

October 2023

Right Ear Cochlear
Pennsylvania Hospital

2023

2024

July 2023

Left Ear Cochlear.
Pennsylvania Hospital

April 2024

Bilateral hearing test to compare to original. 94% improvement.



1. WHO

About 2 to 3 out of every 1,000 children in the United States are born with a detectable level of hearing loss in one or both ears.

Age is the strongest predictor of hearing loss among adults ages 20-69, with the greatest amount of hearing loss in the 60-69 age group.

Among adults ages 70 and older with hearing loss who could benefit from hearing aids but fewer than 1 in 3 has ever used them.

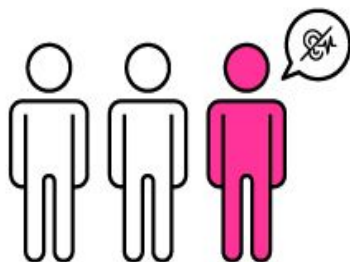
Hearing Loss in the USA



1 in 7 People with hearing loss in at least one ear



1 in 3
Age 64~75



1 in 2
Age 75+

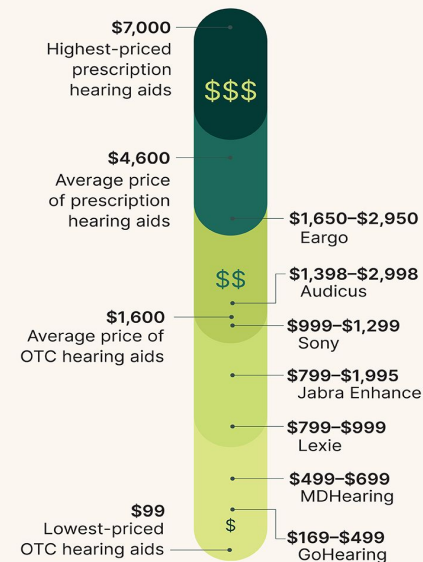


Average Years People Wait Before Seeking Help



7
Years

OTC Hearing Aids Price Range



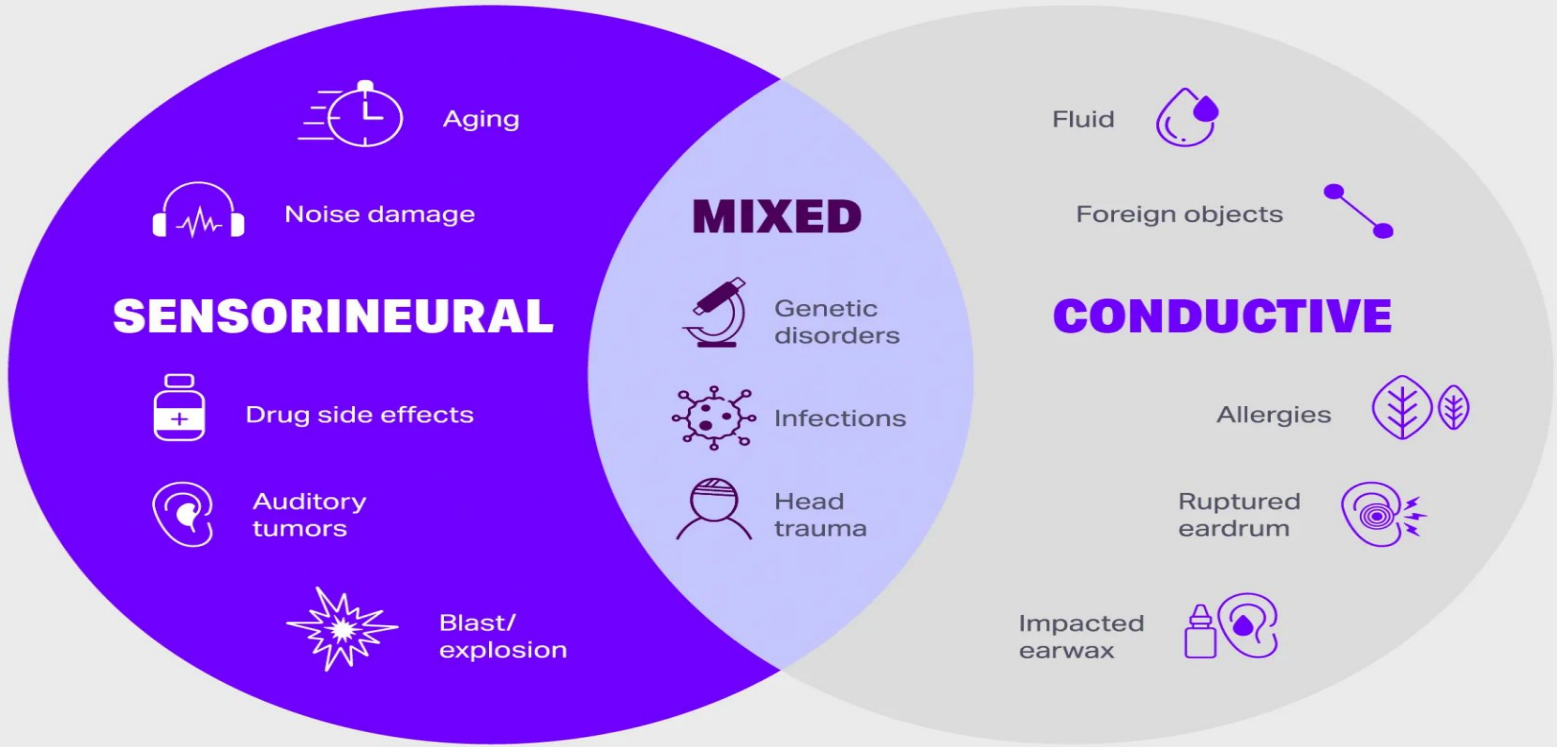


2. WHAT

There are three types of hearing loss:

- o Conductive, which involves the outer or middle ear.
- o Sensorineural, which involves the inner ear.
- o Mixed, which is a mix of the two.

TYPES OF HEARING LOSS



How is hearing loss diagnosed?

Your healthcare provider will ask about your symptoms and do a physical exam checking for signs of infection or other issues that could cause hearing loss. They may do a CT scan (computed tomography scan) or MRI (magnetic resonance imaging).

Your provider may refer you to an audiologist (or refer to your health benefits plan) who will do specific hearing tests.



– Common hearing tests include:

Pure-tone testing:

This common hearing test finds the quietest volume you can hear at each pitch.

You will wear headphones or earplugs to hear the sounds and speech in addition to a device on your head for bone conduction testing.

The combination of testing with headphones/earplugs and bone conduction testing helps your audiologist determine which type of hearing loss you have.





BEHIND THE EAR



RECEIVER IN THE
CANAL / EAR



OPEN FIT



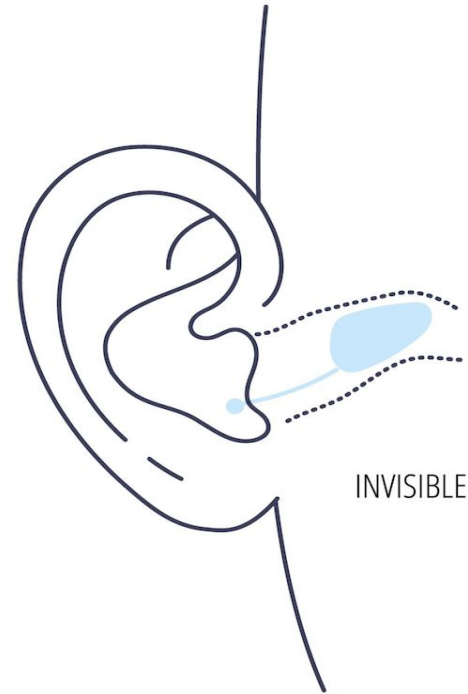
IN THE EAR



IN THE CANAL



COMPLETELY IN THE CANAL



INVISIBLE IN CANAL



3. WHERE

- Begin at your primary doctor or schedule an appointment in an Otorhinolaryngology department and audiology department (these appointments may be scheduled together as the Otorhinolaryngologist might need to read the hearing test results)



4. WHY

You may be
experiencing the
following:

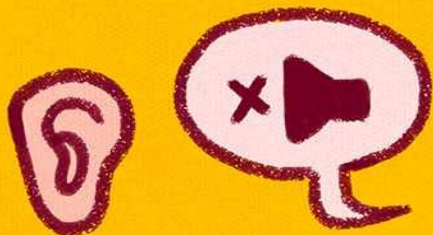
Signs You Need a Hearing Test



Trouble hearing others in noisy places



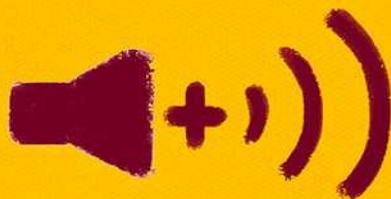
Asking others to repeat themselves



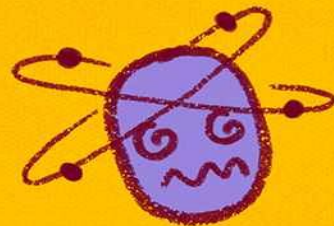
Straining to hear spoken words



Difficulty hearing high-pitched sounds



Constantly raising the volume



Dizziness or ringing



5. HOW

Methods to correct hearing loss





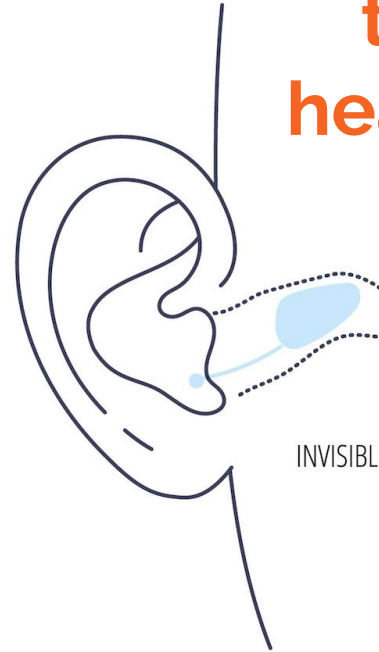
BEHIND THE EAR



RECEIVER IN THE
CANAL / EAR



OPEN FIT



INVISIBLE IN CANAL



IN THE EAR



IN THE CANAL



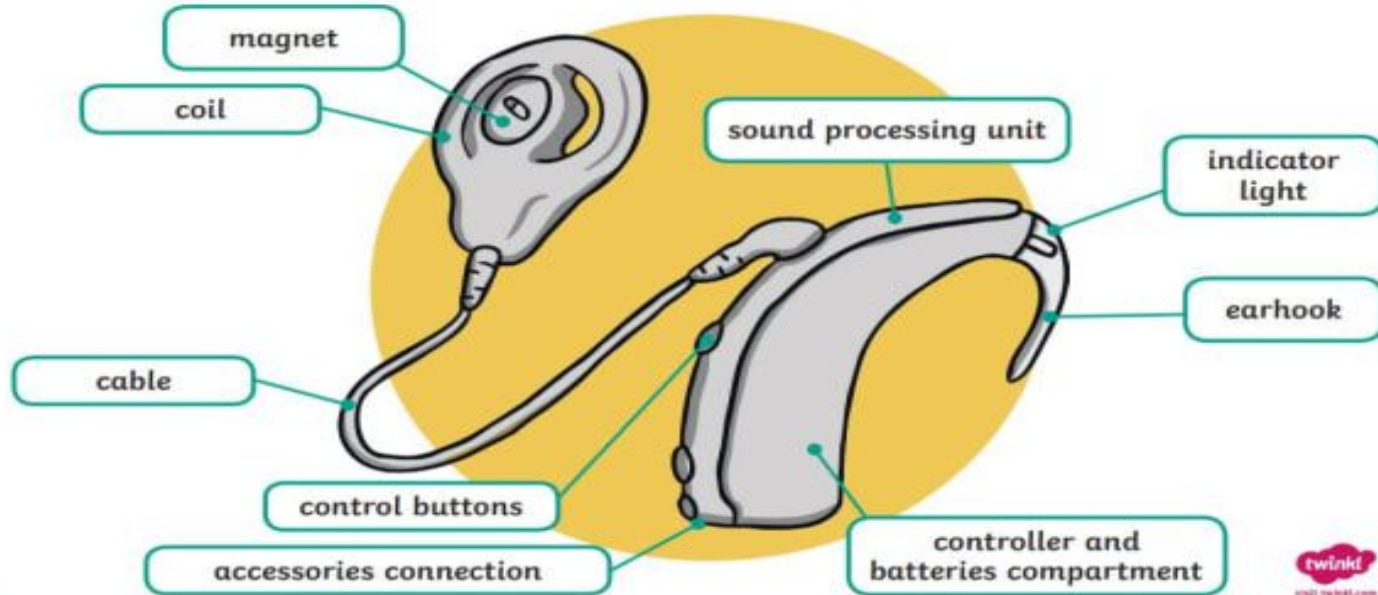
COMPLETELY IN THE CANAL

Different types of hearing aids

**Hearing aids:
No surgery required**

Cochlear Implant

This part of a cochlear implant is called the **sound processor**. It is the part of the implant that can be seen from the outside.



Cochlear Implants: Surgery Required



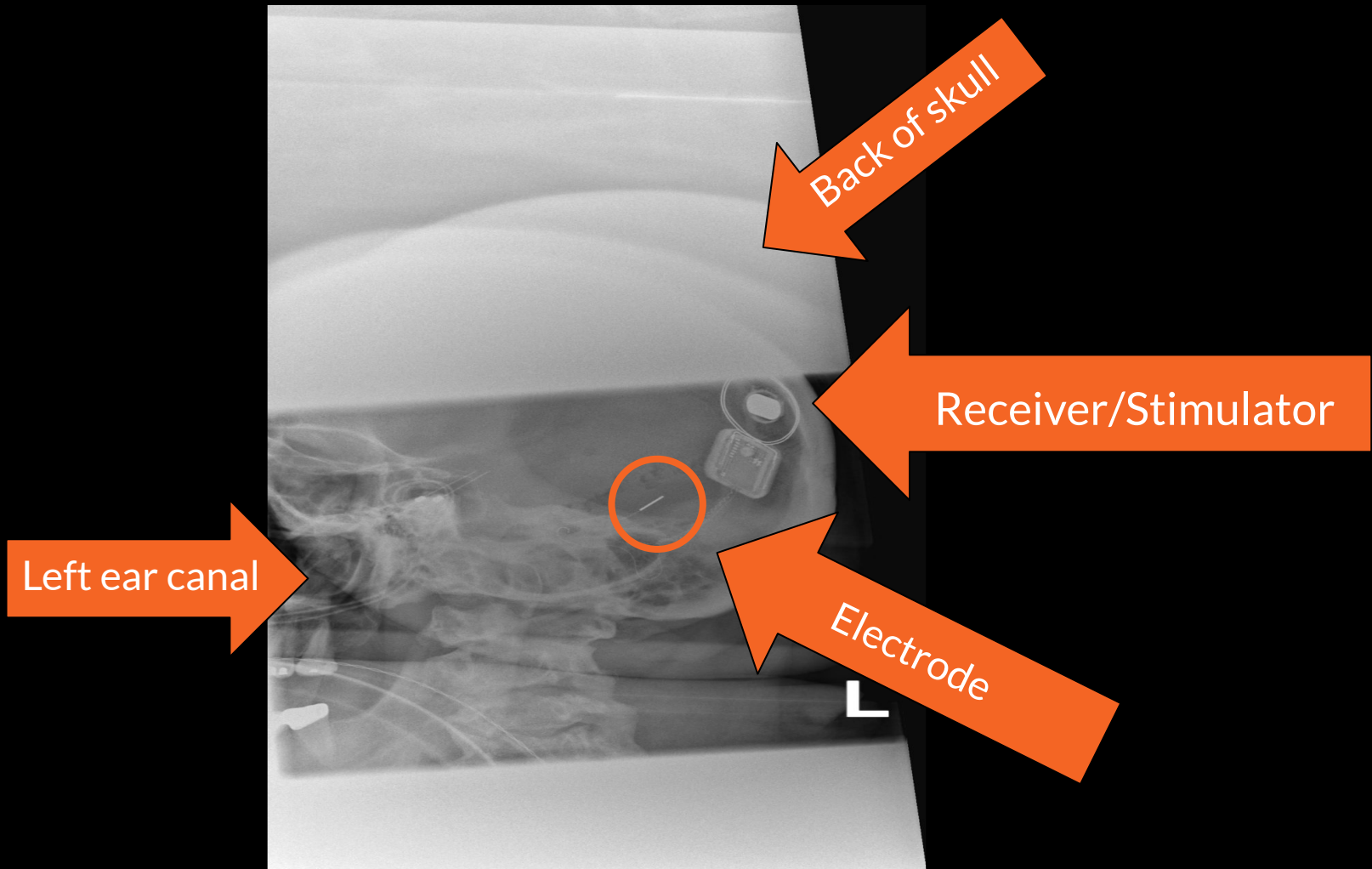
Receiver/Stimulator



Ball Electrode



Electrode Array



Left ear canal

Back of skull

Receiver/Stimulator

Electrode

Review: Basic Steps

1.) Consult
with
Audiologist

2.) Go for
hearing
test

3.) Meet with Ear,
Nose, Throat
(Otolaryngologist)
to review solutions
based on results

A stylized red icon of a pair of headphones with a curved headband and two ear cups.

*Any
Questions?*